



GOLLE[®] Awnings 
Ideas for Tomorrow's World

www.sonnensegel.de



Protection from the Sun and Weather

First-class design work can do more than just unite form and function.

It also awakens emotions. Design aspects are included in expressive patterns and high-quality materials give the awnings their individual character to provide protection against the elements like sunshine, wind and rain.

Innovative and unusual solutions are not only an attractive eye-catcher - they also safeguard people's health, as they keep many dangerous UV rays at bay.

Sunshine is most enjoyable when you are in the shade!

Different kinds of mountings, which allow you to use your awning in all weathers, are another key feature.

The next few pages will provide you with a tour of the world of exclusive awnings to protect people against the sun and different types of weather. Allow this brochure to inspire you!



At a Glance

Page

4 - 7	Home • Garden • Leisure
8 - 9	Schools • Nurseries • Swimming Pools
10 - 11	Cafés • Hotel • Pubs
12 - 13	Event Awnings • Seasonal Awnings • All-Year Awnings
14 - 15	List of Materials
16 - 17	Design • Planning • Mounting
18	Cleaning • Care • Storage
19	Our Expertise - Your Gain



Home • Garden • Leisure

Textile structures form part of modern architecture styles and are a symbol of an individual lifestyle. Enjoy fantastic leisure time and create a modern, new habitat where you feel at home.

Awnings are available in an infinite number of shapes. Each awning can be tailor-made to meet your requirements.

You can highlight new features with expressive colours and create a unique atmosphere for your home.





Because of the variety of designs for awnings, it is now possible to create a quiet and undisturbed private sphere. You can make your own design a reality with us – we will provide support for drafting and planning the project and even mount it.





Our awnings provide shade for your patio, create new living space and give your home an individual style. Textile materials stretched in a fashionable way to form awnings create shade, provide a summery feel and change bright sunlight into gentle light and heat into pleasant warmth.





Awnings protect people and animals from intense UV radiation. Deliberately locate your awnings to achieve the best possible shade and improve your quality of life. Our awnings are individually made of high-quality, non-fading and UV-resistant materials at our own workshops – and this is what guarantees the long serviceable life of our products.



Double awning for a koi fish pond



Schools • Nurseries • Swimming Pools

*Awnings combined with a balcony
at a nursery school*





Large awnings for young swimmers

The practical, appealing design of our awnings combined with modern design features enables users to turn previously unused or unattractive space into a new living area. Many public institutions have increased the value of various buildings by using our awnings.

Children in particular need our attention and care. Awnings encourage children to spend time where they really love to be – in swimming pools or sandpits. Depending on the colour of the awning, we can reduce the sun's rays by up to 96%. You will find more information on page 14.





Combining a conservatory blind and awnings at the sides

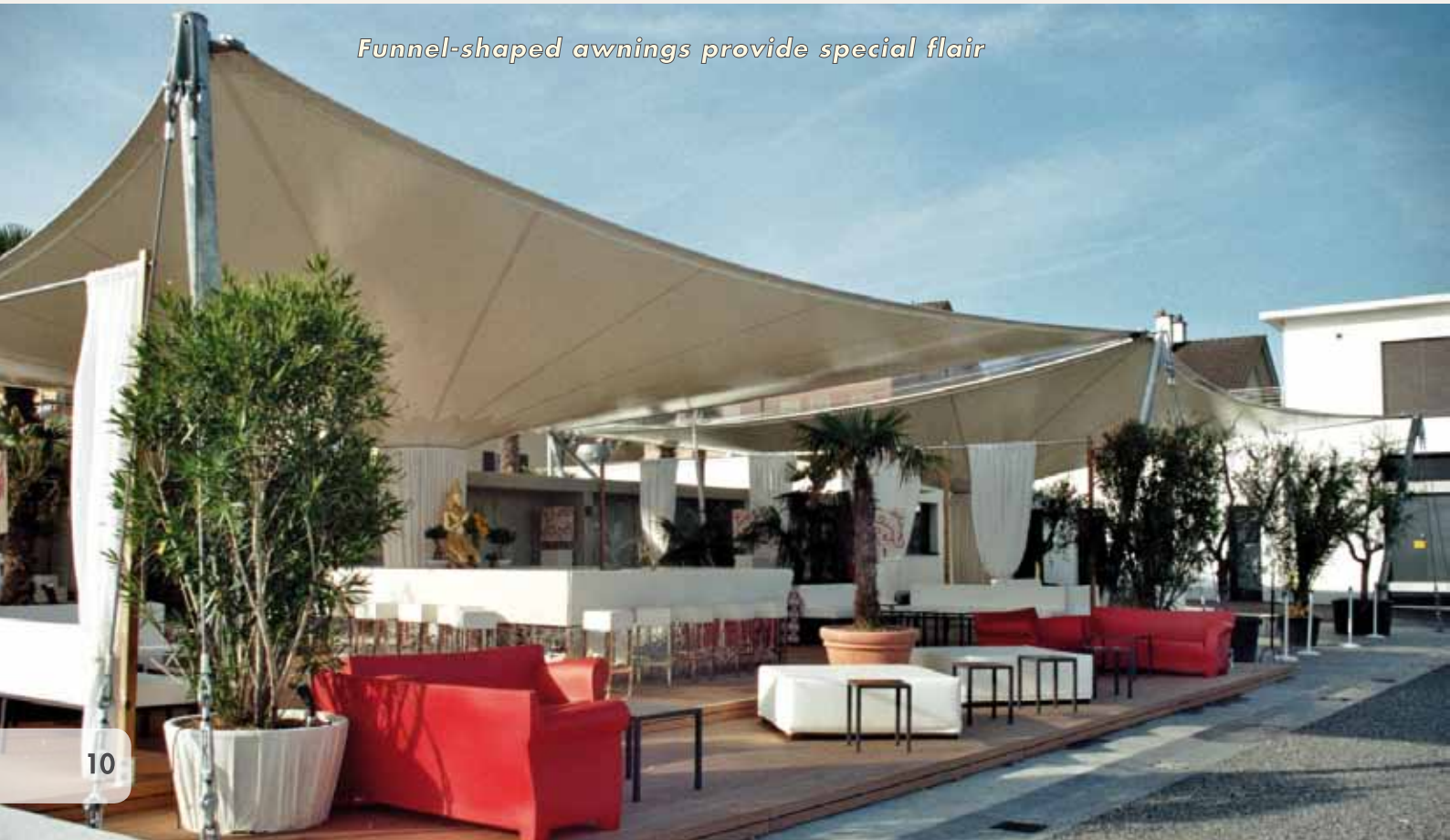
Cafés • Hotel • Pubs

Light but tough awning structures allow you to cover large areas without any problems – in creative ways. Awnings visually upgrade patios, smoking areas or

even rear courtyards so that this space can be used efficiently.

Our awnings have an advantage over traditional parasols – only a few stays are necessary and there is no need for many stands to support the structure.

Awnings can overlap to prevent any gaps.



Funnel-shaped awnings provide special flair



*High point awning for large areas
15 m x 7.50 m*

The projects shown here illustrate various ways of using our awnings – ranging from side awnings, funnel-shaped awnings, high point structures and even two-dimensional overlapping awnings.

Large, old trees can be integrated in the awning design. Attract even more attention by using your awning as an advertising area.

Get people's attention!



*Covering for a pub courtyard in
Dublin, Ireland*

Event Awnings

Seasonal Awnings

All-Year Awnings

Event awnings are popular because they are easy to handle and can be used very flexibly. They provide an airy feel because of their low surface area weight and the structure of the material. They mainly provide protection against solar radiation.

We use high-quality manufacturing processes and the slightly concave cut edges and corners are reinforced and made with stainless steel fittings.

The supporting poles can be connected to water tanks to make everything mobile.

This enables the special supports to handle the static forces.

Seasonal awnings can be used during the complete summer season. They remain firmly mounted and can resist fairly high wind forces because steel rope is used. The side edges of these awnings have a concave shape and the corners are reinforced with several layers and equipped with aluminium or stainless steel brackets.

As soon as the awning is attached to the brackets with tensile forces, the edges spread the awning material evenly. This interaction between the shape and tautening of the material and its inherent strength ensure that no creases form. They can be used over patios, children's playgrounds, swimming areas and pools, for example, during the season.



Event awning measuring 8.50 x 8.50 as an eye-catcher for your large or small celebrations



We calculate the statics and design all-year and all-weather awnings for use all year round. We take into consideration wind forces and the weight of snow and special local conditions. Heavier PVC materials are used for the membranes – and the edge design and anchoring have the correct dimensions for this purpose. The membrane designs mean that you are not bound by the weather at any time of the year and the membrane can be made in the form of a pitched roof, an arch, a funnel or a high point.



List of Materials



Tent mesh

- Mesh made of UV-resistant, flat and HDPE yarns
- Reduces UV rays by between 91% and 98% (depending on the colour)
- Reduces the sun's rays by between 77% and 96% (depending on the colour)
- A highly stable mesh thanks to its appropriate fabric structure
- Highly suitable for light membrane projects
- Flame-retardant according to DIN 4102 B1



Sunworker

- Fine-mesh PVC-coated mesh fabric
- Specially developed to provide high-quality protection against the sun
- A light material 350 g/m²
- Air and water permeable
- For small to very large awnings
- Good protection against the sun, not affected by wind and rain
- Particularly suitable for gardens and green spaces (the lawn underneath does not dry out)
- Non-fading and UV-resistant



Sea Star Masacril

- 100% acrylic fabric with fluorocarbon coating
- Waterproof up to an 800 mm water column
- The fluorocarbon coating provides protection, which reinforces the water-repellent effect and prevents dirt from sticking
- Surface weight 330 g/m²
- UV-resistant and weatherproof
- For small to large awnings
- Easy to clean



Ferrari

- PVC-coated polyester fabric
- Surface weight 650 g/m²
- For medium and large awnings
- The Ferrari fabric pre-stress technology gives the awnings a superb appearance and the dimensions remain stable
- 100% waterproof
- Non-fading and UV-resistant

Membrane PVC-coated fabric

- Type I, II, III, IV, V
- Surface weight from 800 g/m² to 1450 g/m²
- Fire behaviour satisfies DIN 4102 B1, NFPA 701, BS 5438 and other standards
- For all-year awnings and medium to heavy membrane structures



Membrane-like PTFE-coated fabric

- Fibre-glass fabric type II, III
- Surface weight from 800 g/m² to 1150 g/m²

Other materials and designs available on request!

Anchorage Materials – Steel Parts

The innovative design of the awnings requires ultra-modern anchorage materials.

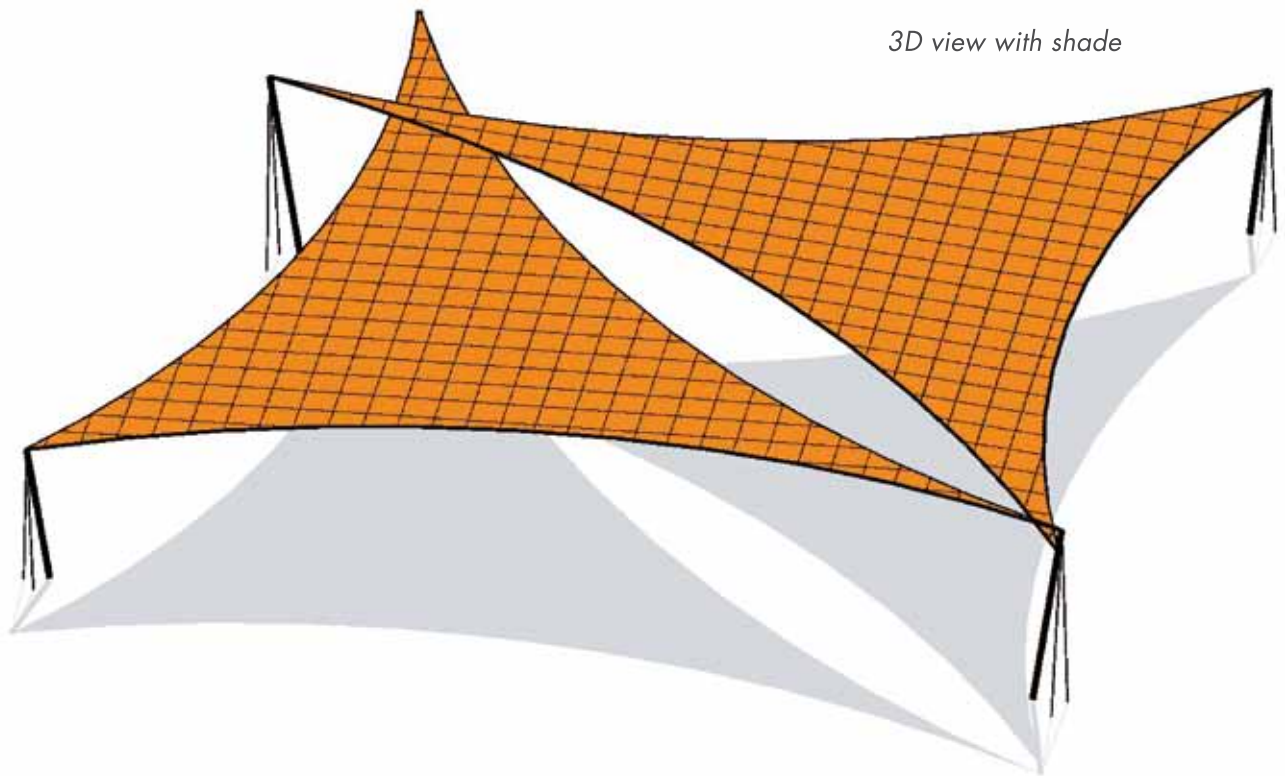
High-quality stainless steel tensioning materials in the form of tension belts or turnbuckles then keep the awnings taut. We can also create flush connections with the wall of your house by making the awning with tent keder and attaching it to the house with an appropriate guide rail system.

The brackets and supports required to provide the best possible stability for your awning are made of galvanized, powder-coated steel or stainless steel, depending on what your site needs. Additional downward tensioning can be provided for the supports by using wire ropes made of galvanized or stainless steel cord.

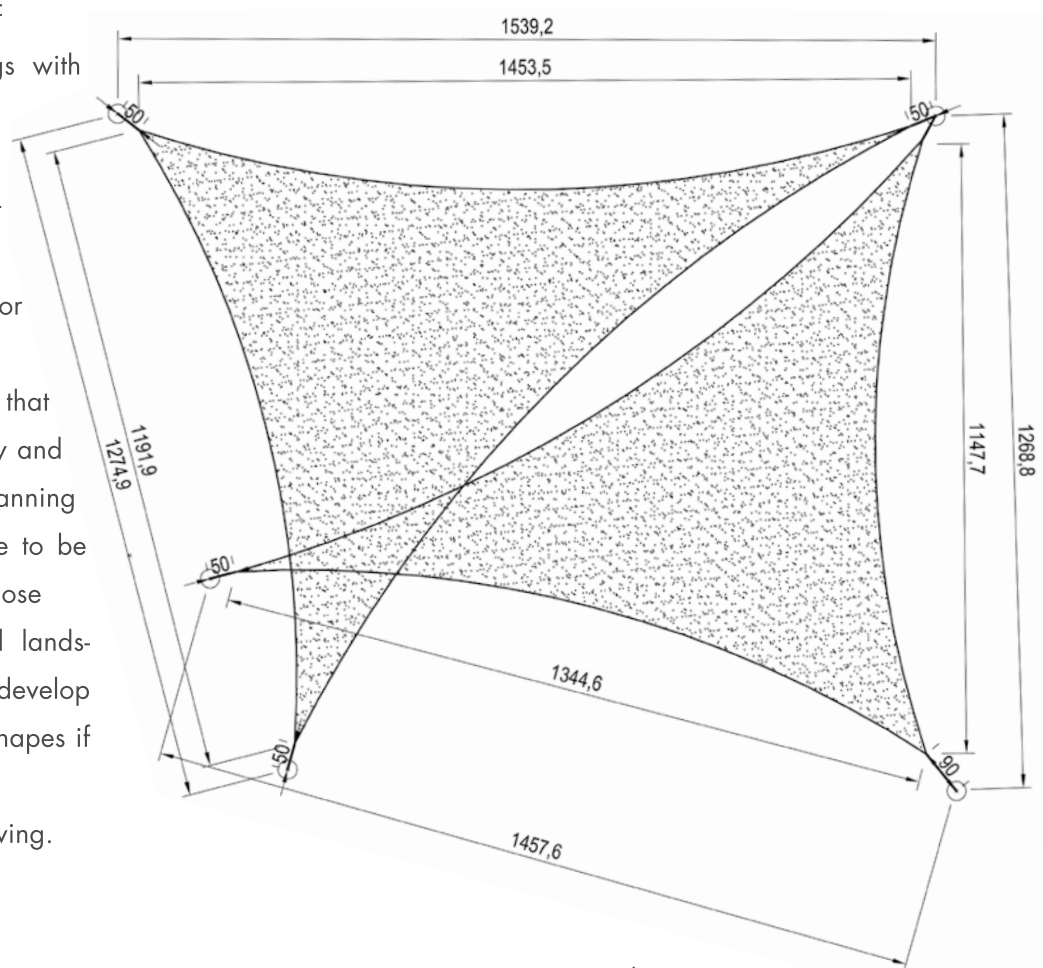
We can find the individual solution to suit any location. All the metalwork is carried out at our company's own metal-working shop in line with the relevant structural requirements.



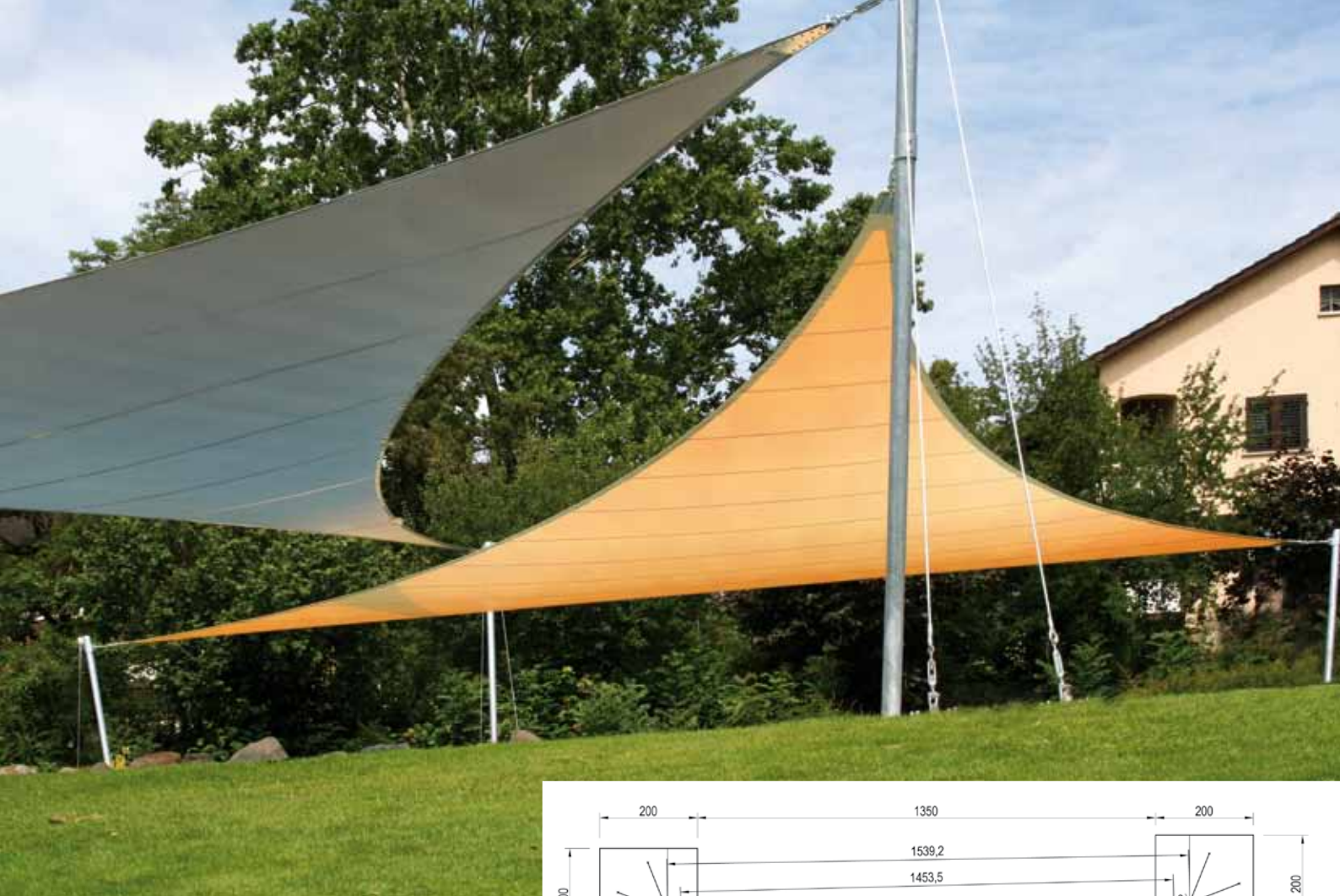
Design • Planning • Mounting



There are many different ways of creating extraordinary coverings with textile membranes made of high-tensile fabrics. Textile constructions can provide just what is needed when traditional building materials like glass or wood etc. reach their limits. In order to achieve the ideal effect that combines aesthetics, functionality and durability in awnings, the planning work and the design work have to be thorough and professional – in close conjunction with architects and landscape designers. Our awnings develop the most unusual and beautiful shapes if we plan the anchorage points at different heights using a 3D drawing.



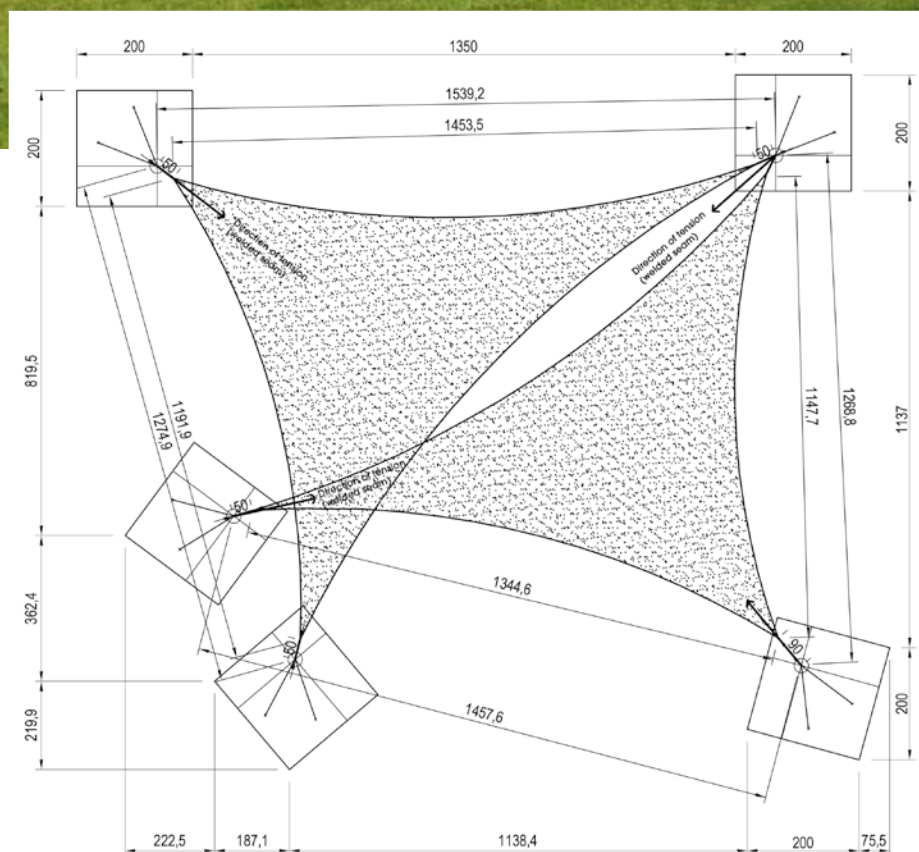
*Drawing with system
and awning dimensions*



Our exact dimensions make all the difference. Precisely defined areas of shade and sizes are computed down to the last detail on account of the changes in solar radiation.

We draw up a feasibility study with an estimate of the costs for our customers during the quotation phase. We are happy to advise you at your site. If you place an order, we supply you with the complete technical information - including the calculations of the wind or tensile forces or the weight of snow.

In the case of major projects, which require structural calculations, we work closely with engineering offices specialising in textile architecture.



Installation drawing including foundation plan

If required, we can fully mount your awning.



Cleaning • Care • Storage

Awnings are simple to use. It only takes a few movements to remove them from their frame, fold them and store them with minimum space requirements until the start of the next season. The high-quality materials are easy and convenient to clean.

We also provide professional cleaning services and use special cleaning and care agents for this. The awnings can be stored in clean and dry conditions specially made for this purpose during the winter months.

Make use of our dismantling, cleaning, storage and reassembly services.



GOLLE Awnings

Our Expertise – Your Gain

Our company, which has its headquarters in the Vogtland region in the German state of Saxony, has been a family-managed business for more than 80 years. The saddlery and upholstery workshops founded by Martin Golle have now become one of the leading German companies for producing technical textiles.

Based on our many years of experience in dealing with technical textiles, we are able to successfully handle sophisticated, creative and individual customer requests, ranging from the planning to the production and even the mounting stages. In order to meet our customers' quality demands, our

MADE IN
GERMANY



company uses the latest technology and machines to manufacture products. Our technical equipment includes computer-controlled cutters for the initial cuts, 4 high-frequency welding machines, the latest sewing machines, automatic heated wedge and hot air machines.

All the manufacturing processes take place at our factory in Plauen, so you obtain a high-quality product that is "Made in Germany".



GOLLE



GOLLE Zelte & Planen GmbH
Kopernikusstraße 76
D-08527 Plauen-Neundorf
phone: 0049 (0) 3741/ 7014-0
fax: 0049 (0) 3741/ 7014-17
e-mail: info@golle.de
web: www.golle.de

Other product groups:

Tarpaulin production: tarpaulins for commercial vehicles, industry and agriculture, customized goods, pond and swimming pool foil

Tent systems: party tents and marquees, animal accommodation, accommodation tents, lightweight construction sheds, tailor-made products

Sign-writing: digital printing, template technique, screen printing